

**ST.0203 Paläontologie**  
**ST.0218 Paläontologie Praktikum**

**6. Systematik + Lophophorata**

# Lophophorata: moderne Diversität



Phoronida



Brachiopoda



Bryozoa



Entoprocta

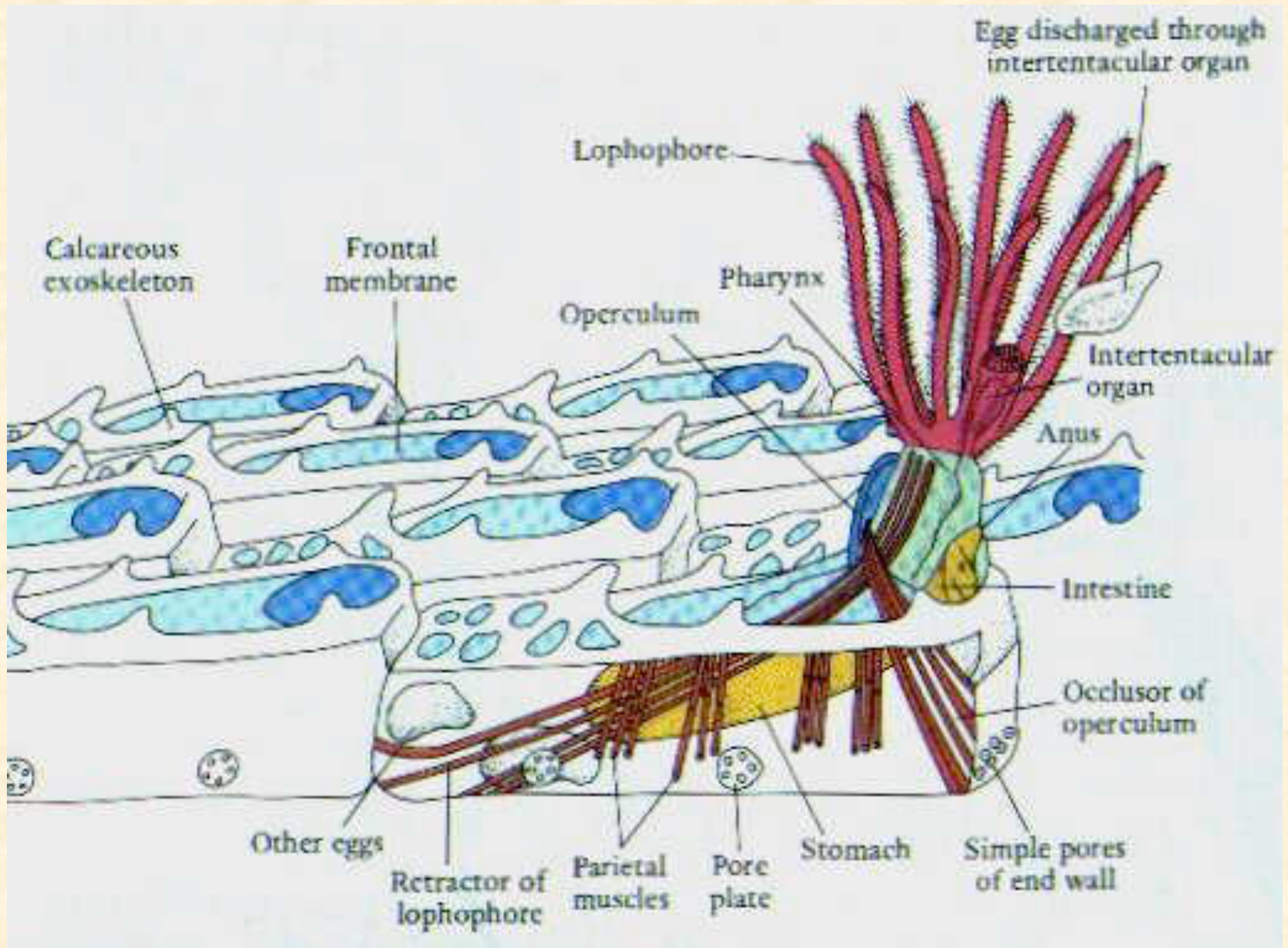
# Bryozoa: moderne Diversität



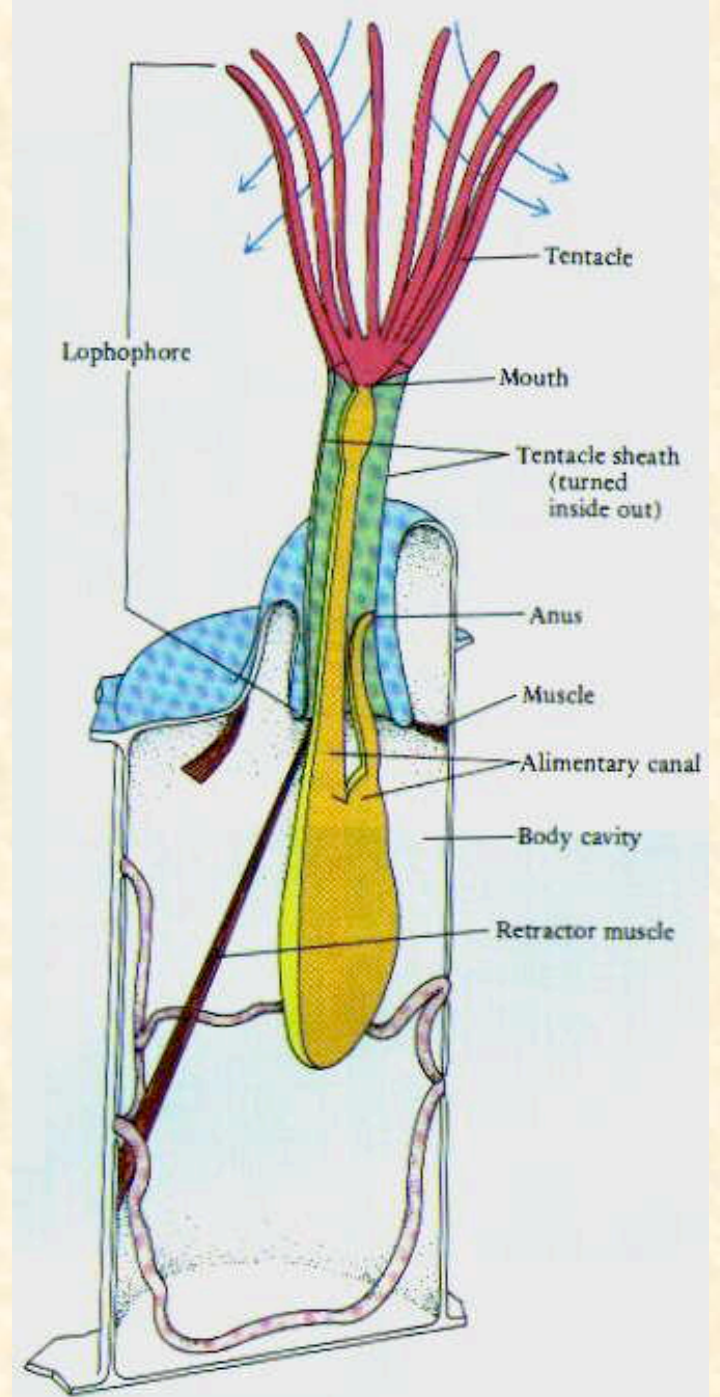
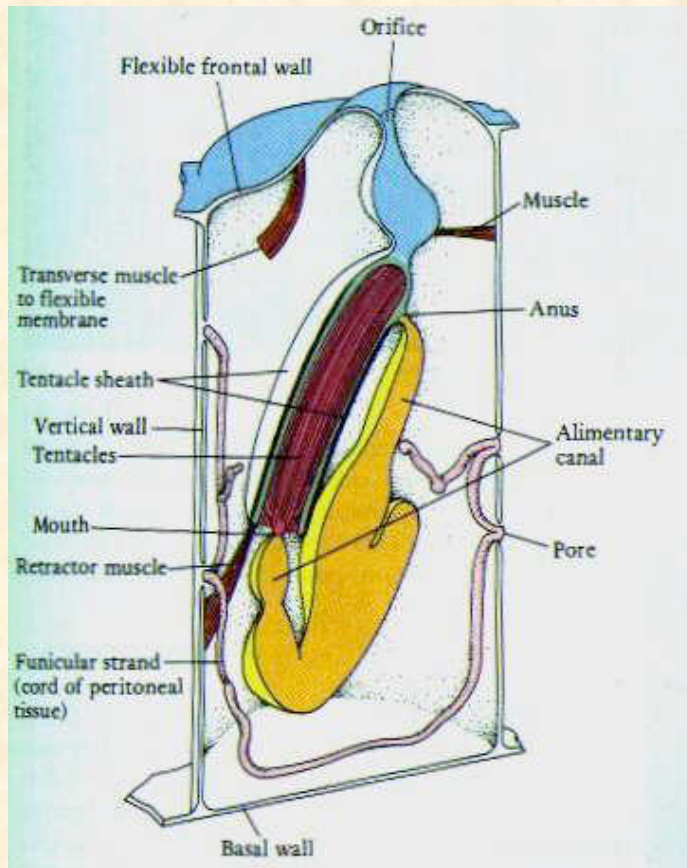
Zubi 05



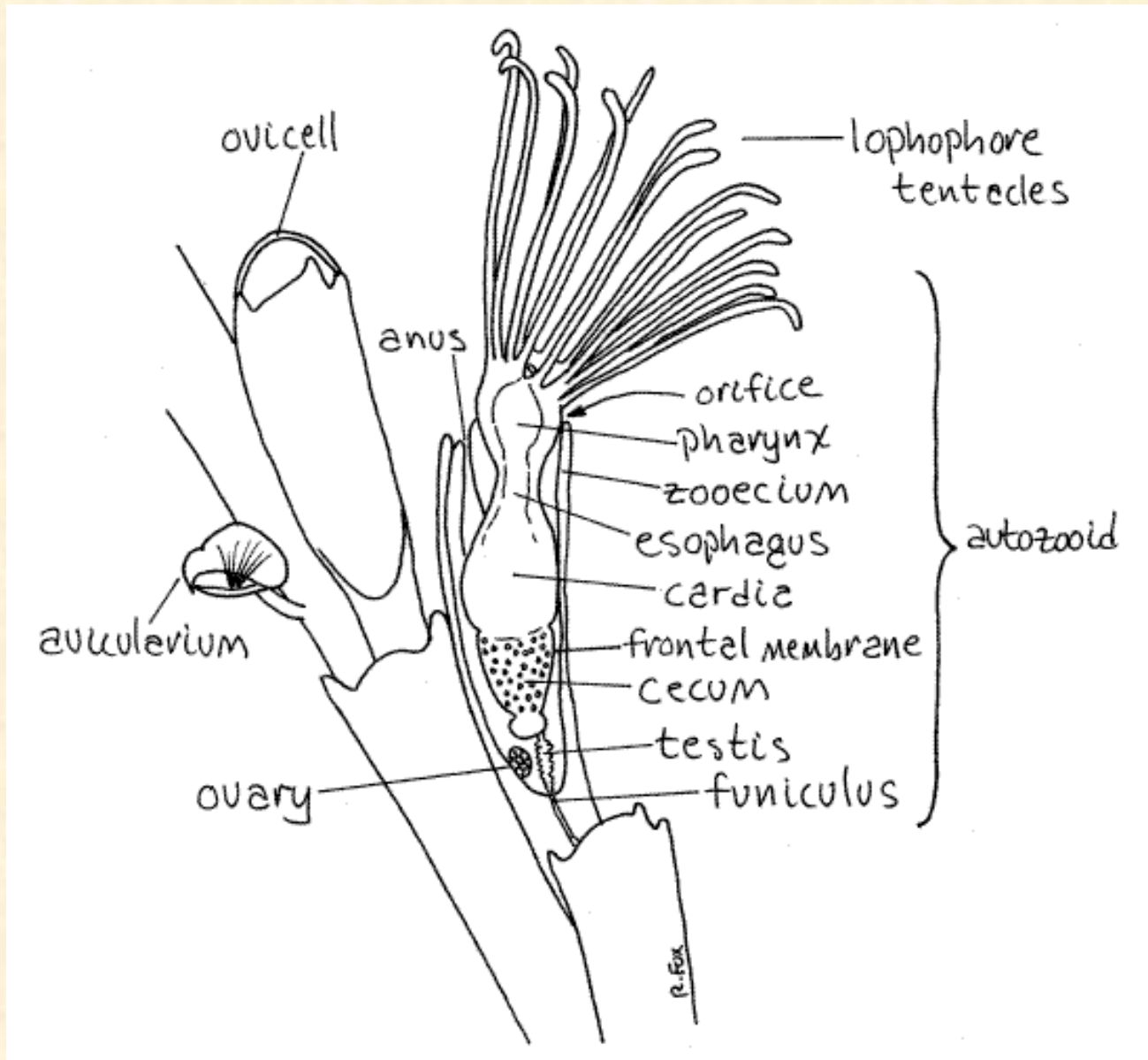
# Bryozoa: Weichteil-anatomie



# Bryozoa: Weichteil-anatomie



# Bryozoa: Morphologie



# Bryozoa: fossile Beispiele



# Brachiopoda: Lebensbild

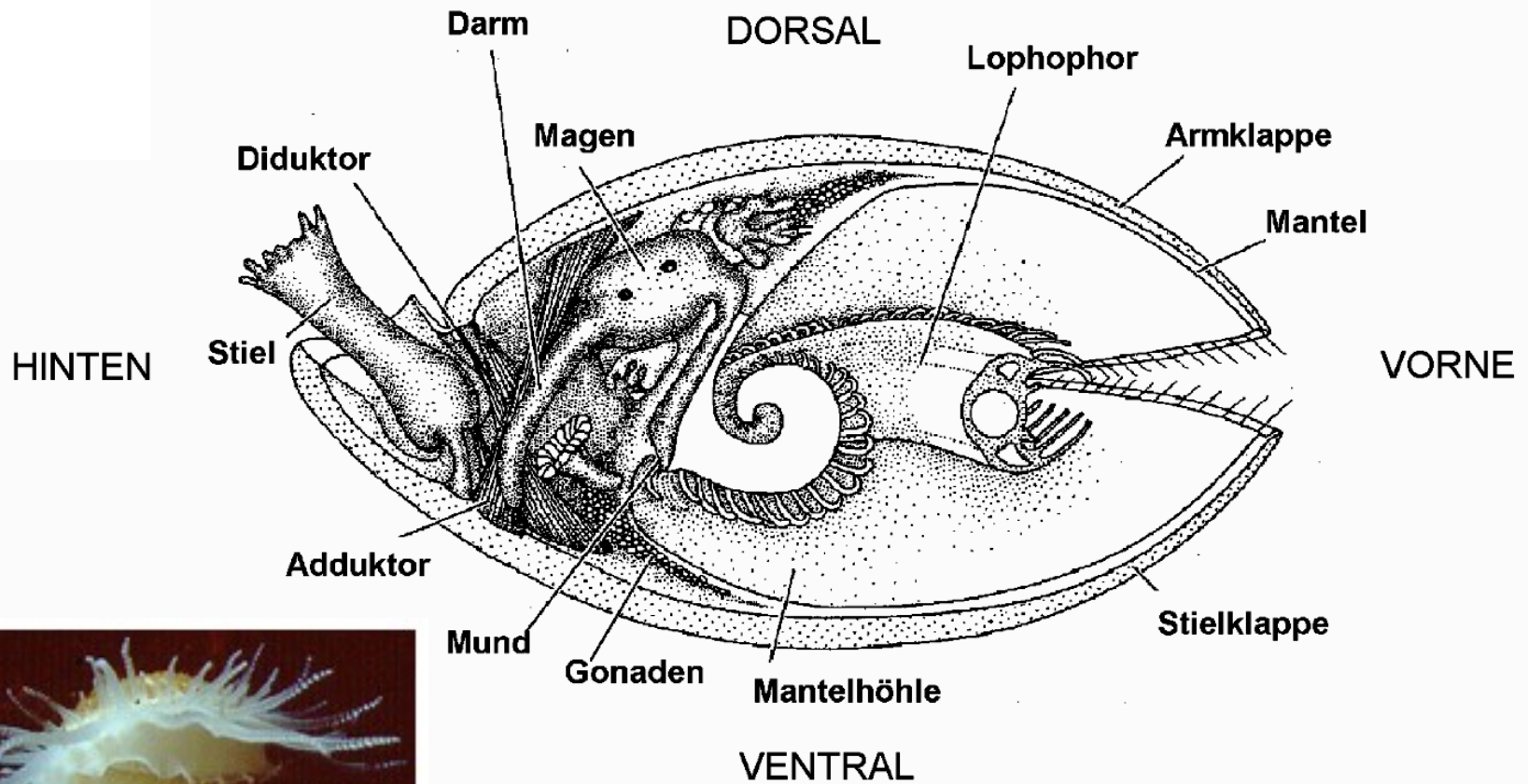




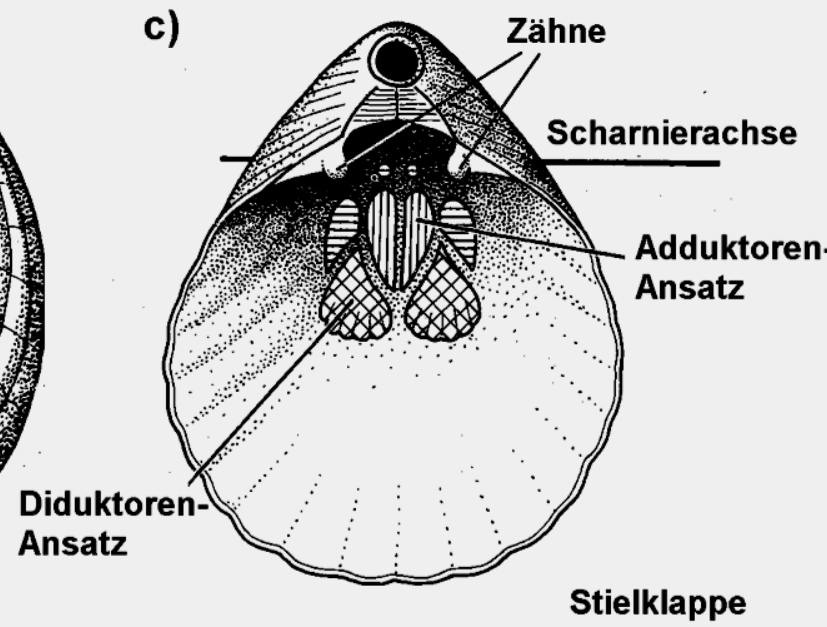
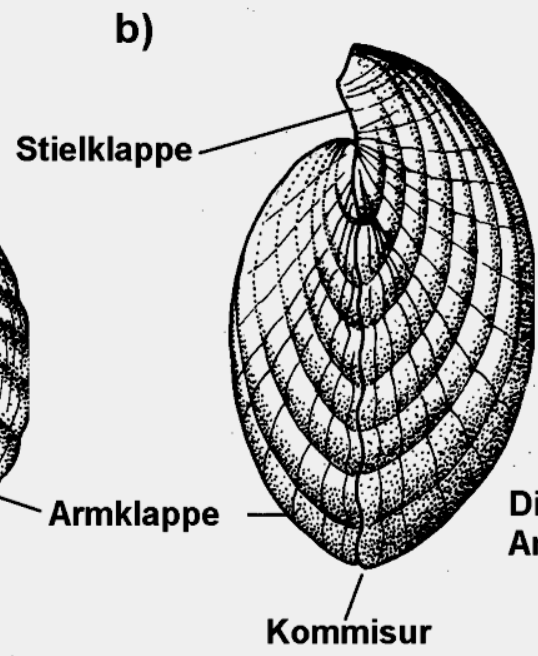
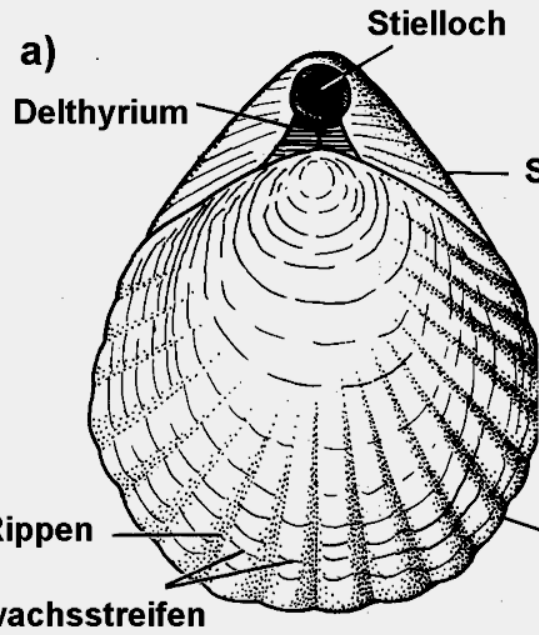
# Brachiopoda: modern und fossil



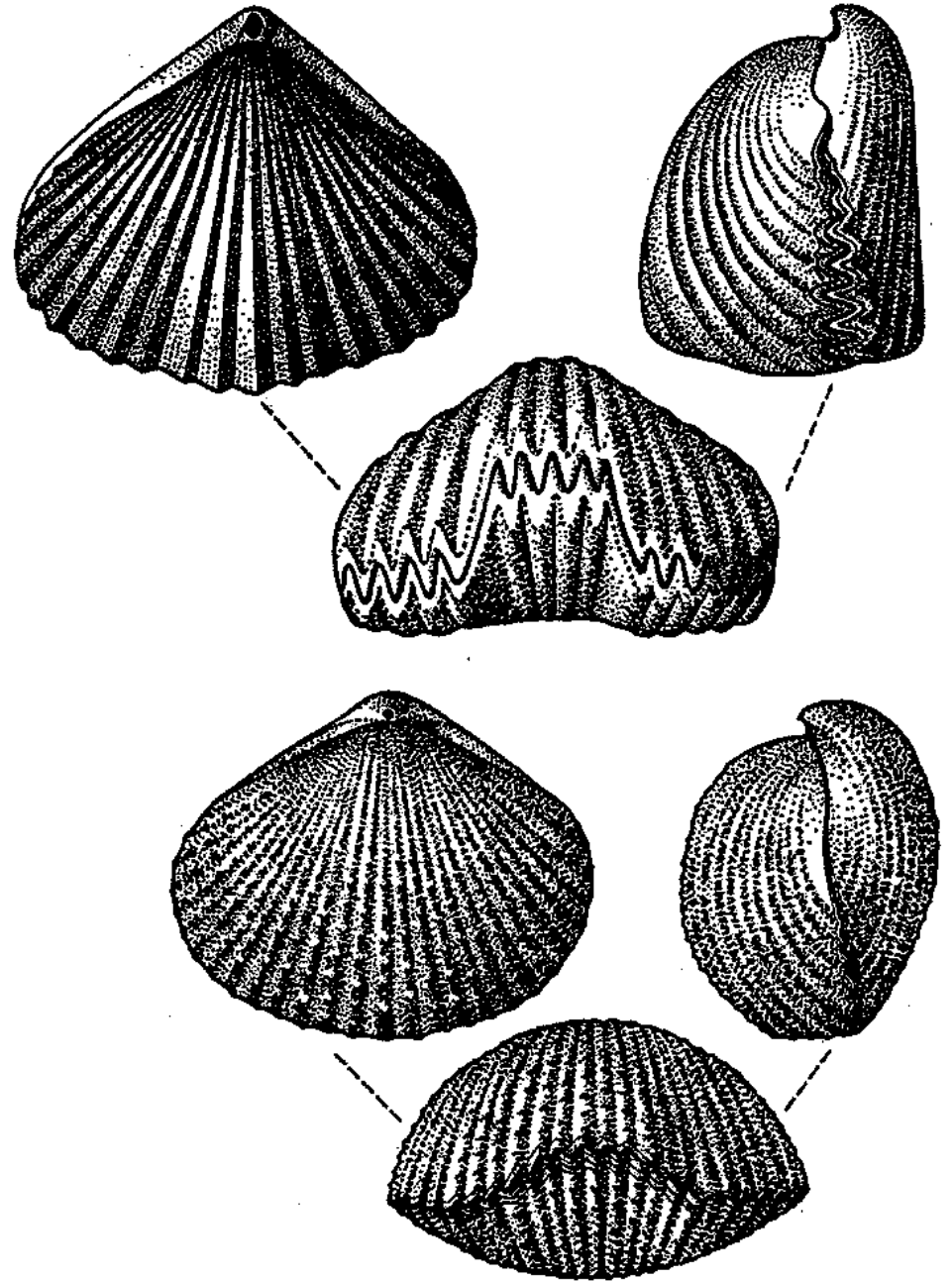
# Brachiopoda: Weichteilanatomie



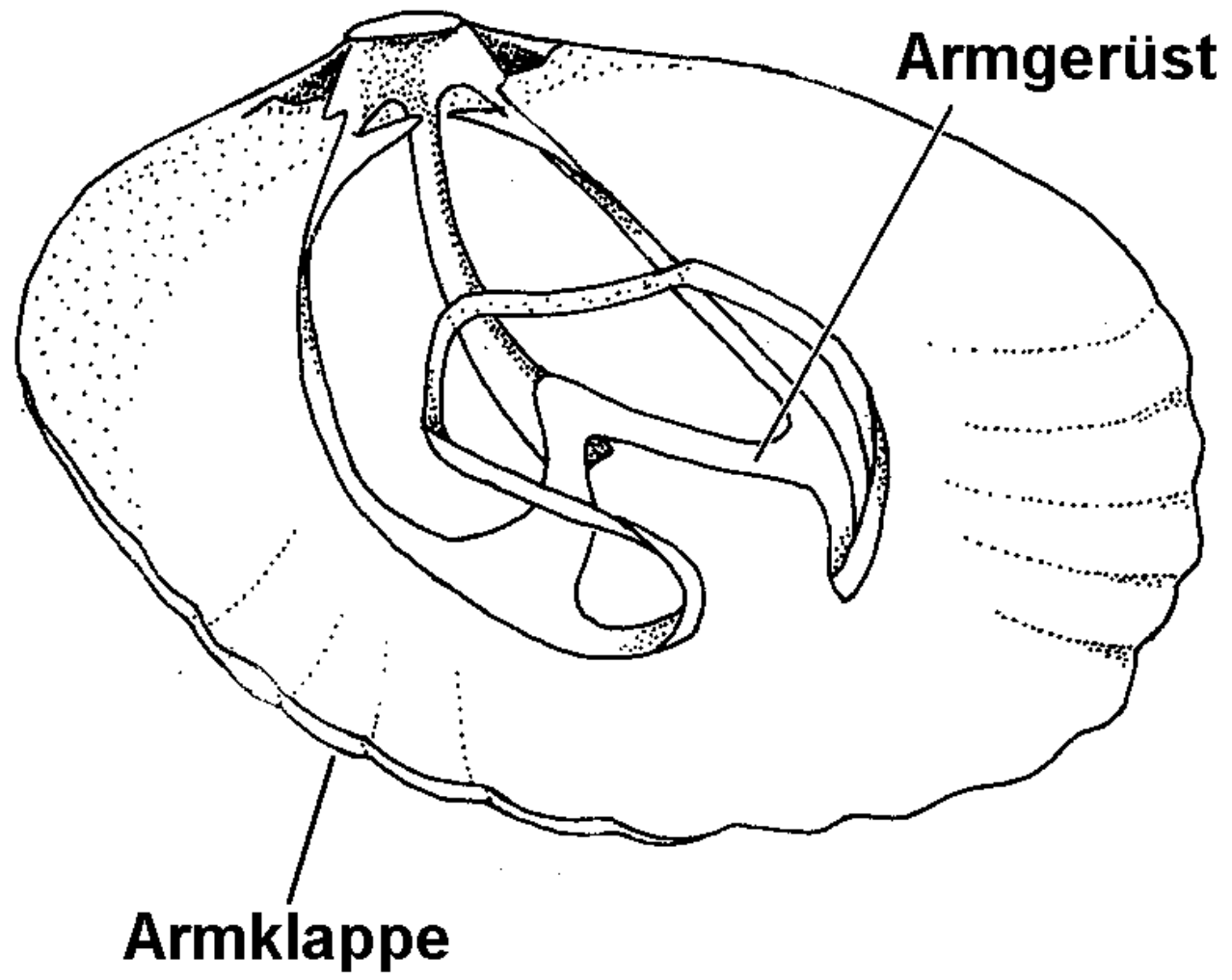
# Brachiopoda: Schalenmorphologie



# Brachiopoda: Rippen



# Brachiopoda: Armgerüst



# Brachiopoda: Armgerüst

a)



*Atrypa*

b)



*Athyris*

c)



*Spirifer*

d)



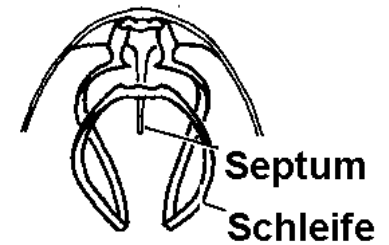
*Rynchonella*

e)



*Platten*

f)



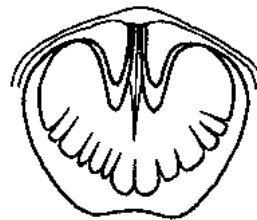
*Terebratella*

g)



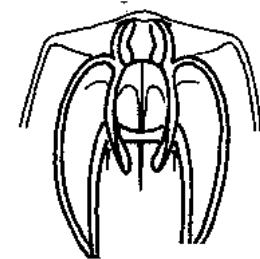
*Stringocephalus*

h)



*Meganteria*

i)



*Terebratella*

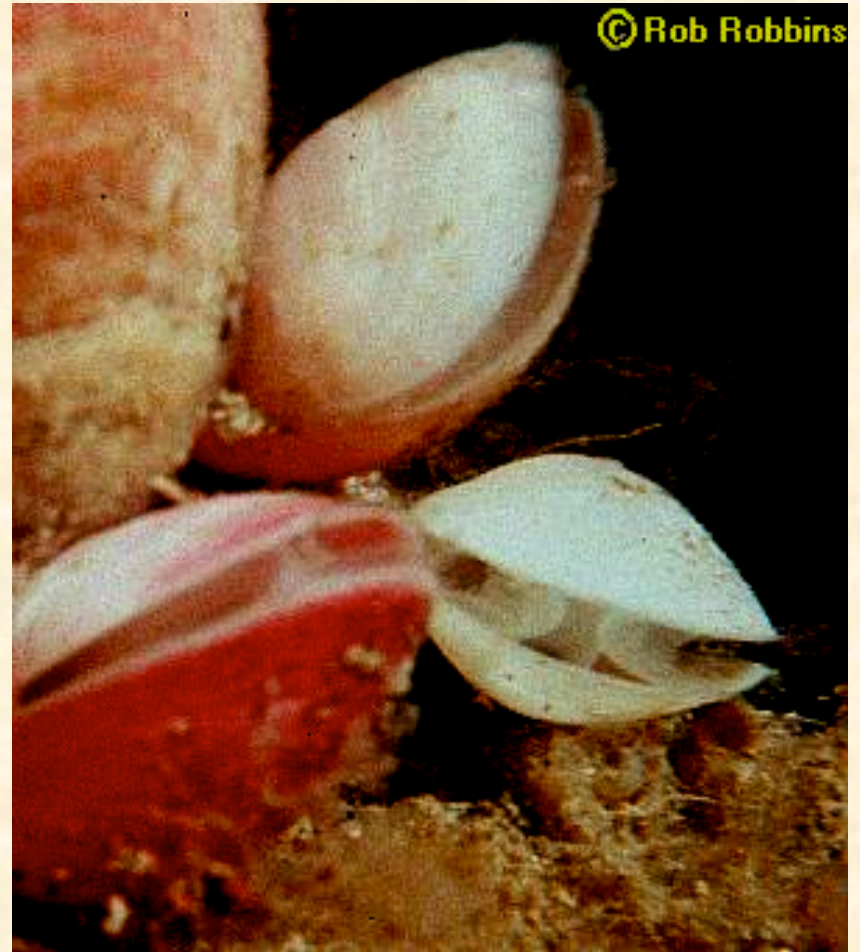
# Brachiopoda: Armgerüst



# Brachiopoda: moderne Inarticulata und Articulata



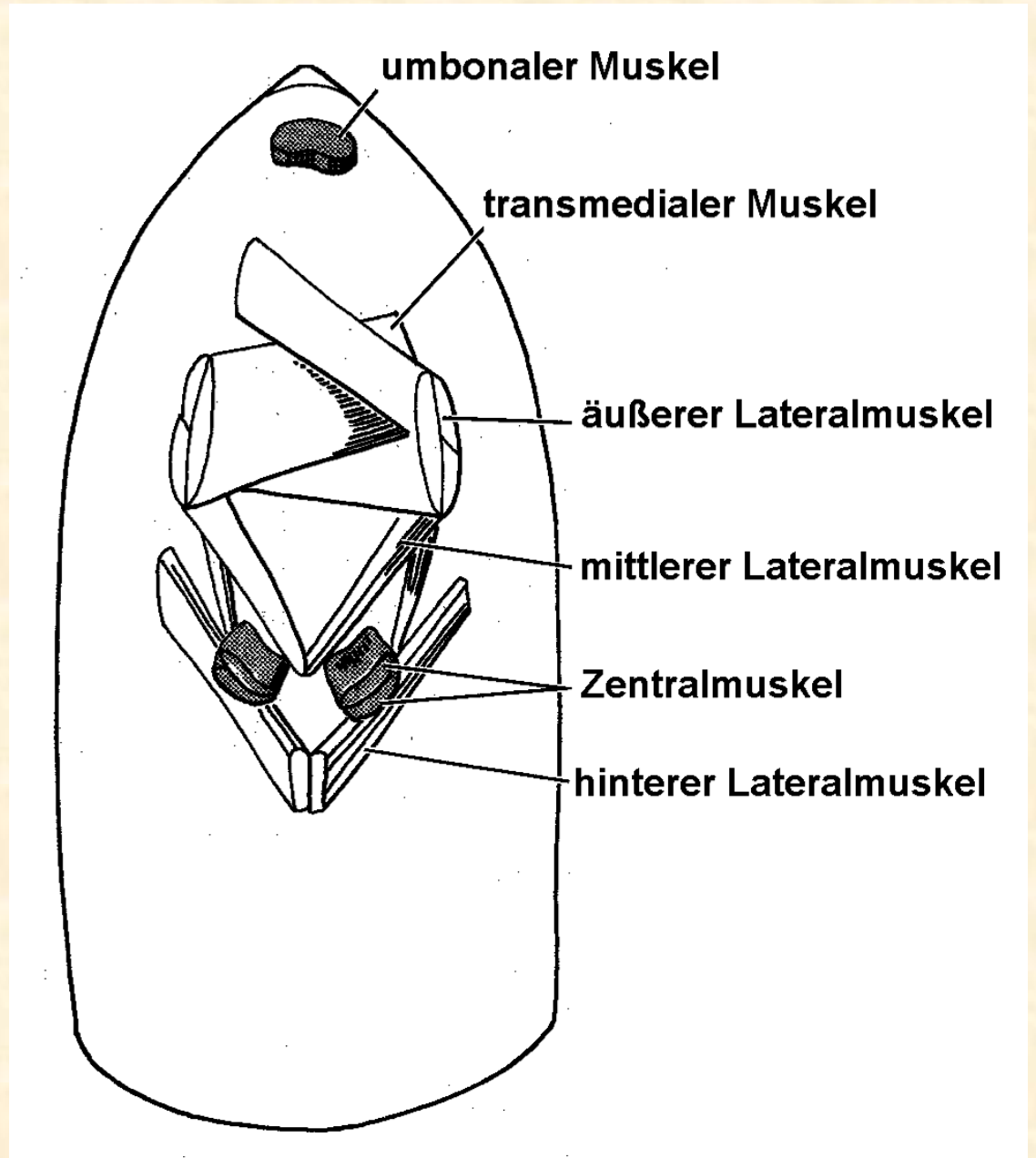
Inarticulata (*Lingula*)



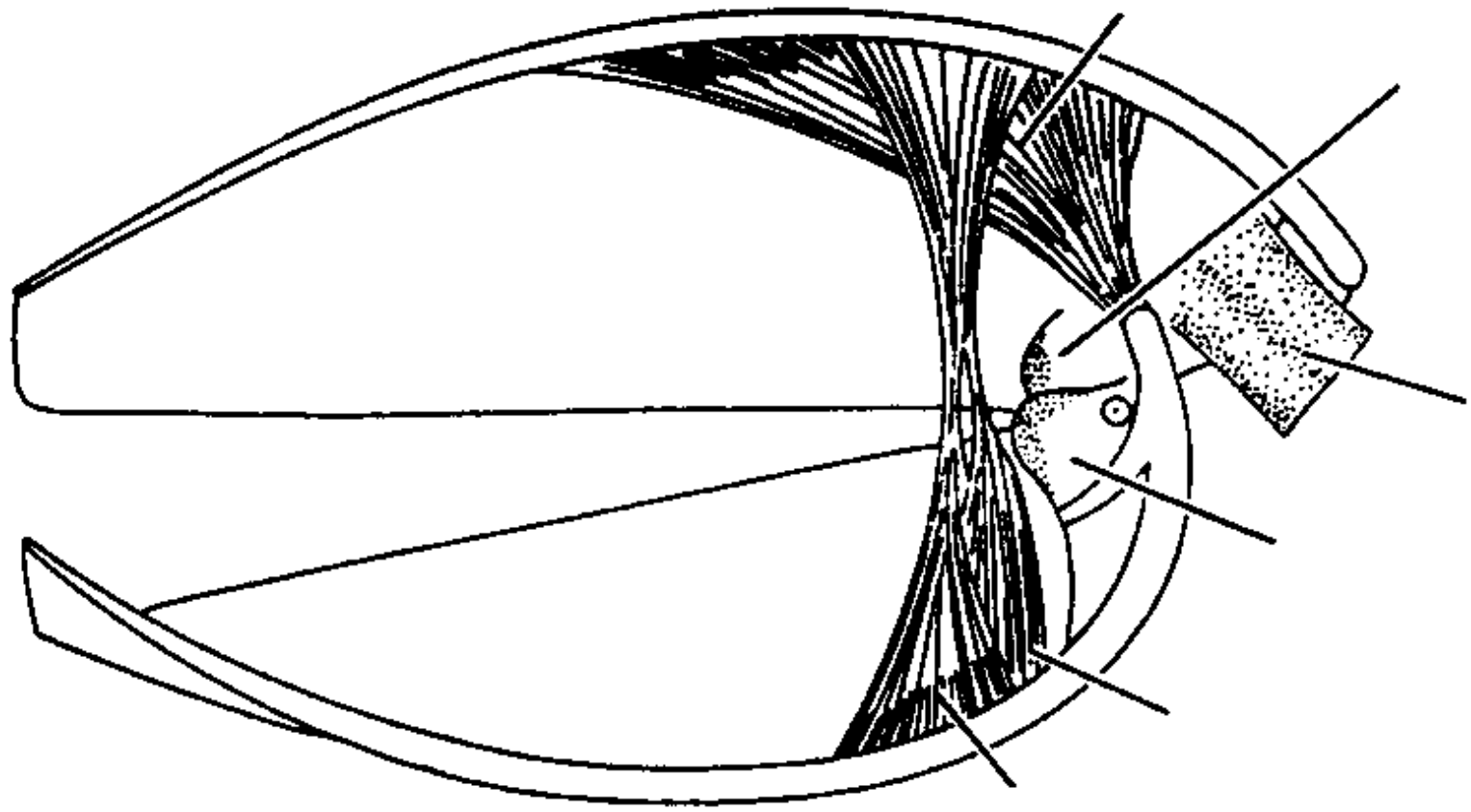
Articulata



# Brachiopoda: Muskeln Inarticulata



# Brachiopoda: Muskeln Articulata



# Brachiopoda: Geologische Bedeutung

